

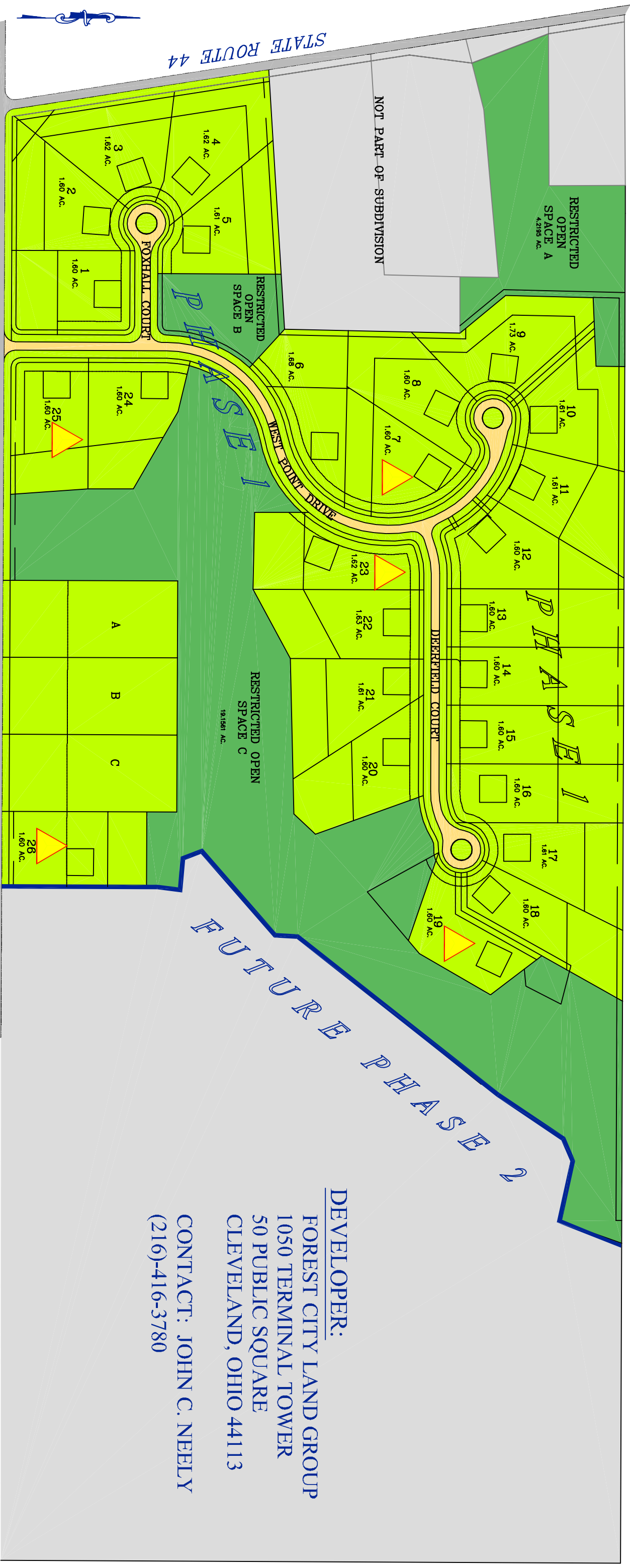
# LADUE RESERVE

MANTUA TOWNSHIP  
PORTAGE COUNTY, OHIO

- Homesites have easy access to Route 422 (3 miles)
- 1.6-acre sites include restricted open space easement on rear of lot.
- All sites designated for well and septic system.
- All homes to be built subject to architectural review guidelines.
- Distances to nearby shopping: Mantua - 4 miles  
Aurora - 8 miles  
Bainbridge - 9 miles  
Solon - 14 miles



PROPERTY OWNED BY THE CITY OF AKRON



**DEVELOPER:**  
FOREST CITY LAND GROUP  
1050 TERMINAL TOWER  
50 PUBLIC SQUARE  
CLEVELAND, OHIO 44113  
CONTACT: JOHN C. NEELY  
(216)-416-3780



WINCHELL ROAD

DRAWING IS FOR ILLUSTRATIVE PURPOSES ONLY. ACTUAL SITE SUBJECT TO CHANGE.

